

Wendy Lee

<http://creativeleeyours.com/>

wendy@creativeleeyours.com

With Sprinkles On Top



May 2021 All Star Blog Hop

Supplies needed:

- Sweet Ice Cream Bundle [156244]
- Basic White 8 1/2" X 11" Thick Cardstock [159229]
- Basic White 8 1/2" X 11" Cardstock [159276]
- Basic Black 8-1/2" X 11" Cardstock [121045]
- Ice Cream Corner Designer Series Paper [154567]
- Designerpapier Signalfarben 6" X 6" (15,2 X 15,2 Cm) [155228]
- Ombre 12" X 12" (30.5 X 30.5 Cm) Specialty Paper [155784]
- Tuxedo Black Memento Ink Pad [132708]
- Versamark Pad [102283]
- Basics Embossing Powders [155554]
- Matte Black Dots [154284]
- Baker's Twine Essentials Pack [155475]
- Heat Tool (Us And Canada) [129053]
- Silicone Craft Sheet [127853]
- Stampin' Pierce Mat [126199]
- Take Your Pick [144107]
- Paper Trimmer [152392]
- Paper Snips [103579]
- Bone Folder [102300]
- Stampin' Seal [152813]
- Multipurpose Liquid Glue [110755]
- Mini Glue Dots [103683]
- Stampin' Dimensionals [104430]
- Black Stampin' Dimensionals Combo Pack [150893]

Project Recipe:

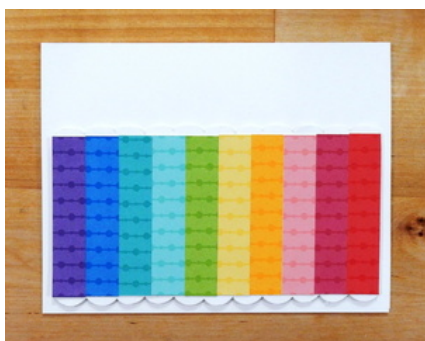


1. Adhere 1/2" x 2-1/2" strips of each of the ten colors in the Brights DSP pack to 5" x 2-1/2" Basic White cardstock with Stampin' Seal.



2. Using the Ice Cream Cone Builder Punch, cut out 8 ice cream scoops (scallop edge) from (2) 7" x 3/4" strips of Basic White cardstock.

Adhere to top and bottom of cardstock strip with liquid glue, clipping away excess with paper snips. Tip: use the Silicone Craft Sheet under the layer as you work to keep from sticking to your work surface.



3. Fold 5-1/2" x 8-1/2" Thick Basic White cardstock in half for card base.

Adhere layer to card front with dimensionals.



4. Using the Ice Cream Cone Builder Punch, cut cone from Ice Cream DSP and scoop from Ombre paper.

Adhere to card front with dimensionals.



5. Stamp sentiment on 2-3/4" x 3/8" Basic Black cardstock with Versamark ink and heat emboss with White powder.

Tie approx. 9" twine into a bow and adhere to back of sentiment with glue dot.

Adhere sentiment to card front with dimensionals.



6. Using the Take Your Pick tool, apply dots to card front.

Stamp card inside and decorate envelope as desired.

Hope you enjoy!