

# Triple Fold Card



## Key supplies used:

- ✦ [Paper Blooms DSP](#) (155222 - SAB 2021)
- ✦ [Tasteful Labels Dies](#) (152886)
- ✦ [Sprig Punch](#) (148012)
- ✦ [Small Bloom Punch](#) (152316)
- ✦ [Confetti Flowers Border Punch](#) (152723)

## Tools required:

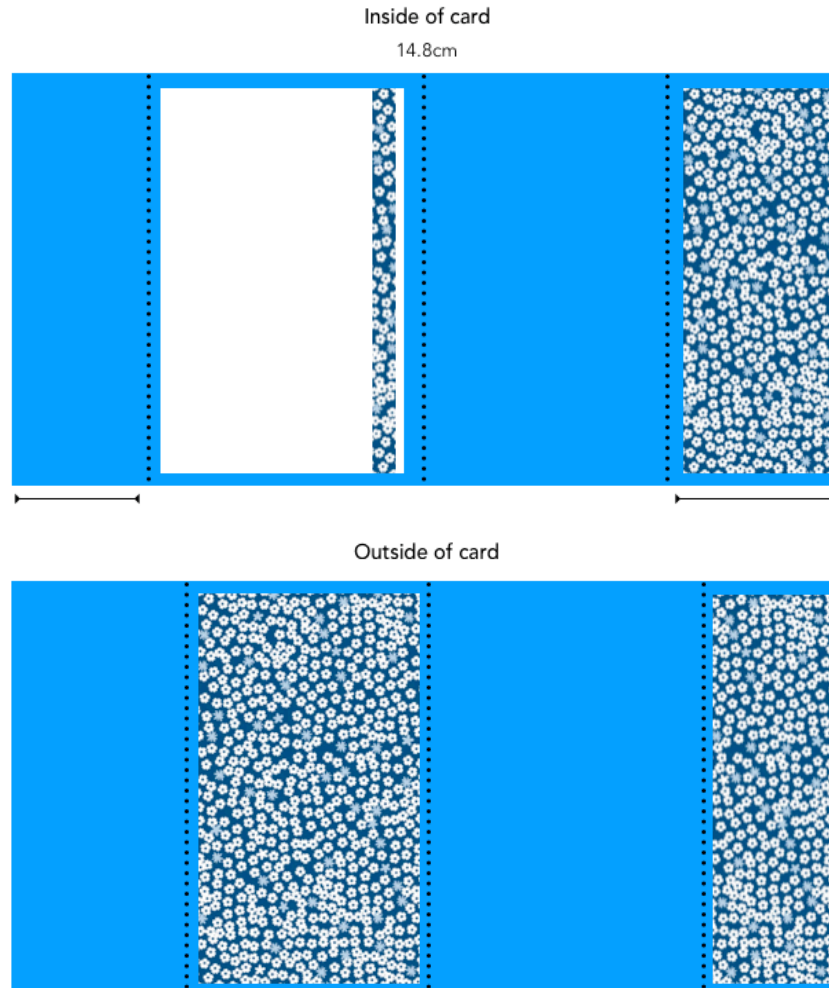
- ✦ Basic craft kit including scissors
- ✦ Adhesives and dimensionals
- ✦ A paper trimmer
- ✦ A means of scoring, eg trimmer/score board
- ✦ Greeting stamps
- ✦ Night of Navy or black ink pad



## Paper measurements:

- ✦ Night of Navy A4 - scored and folded in half
- ✦ Whisper/Basic White - 10cm x 14.3cm
- ✦ DSP 1 - 14.3cm x 7.7cm
- ✦ DSP 2 - 14.3cm x 6cm
- ✦ DSP 3 - 14.3cm x 4cm
- ✦ Label for front
- ✦ Flowers/leaf to decorate

1. Take the piece of Night of Navy cardstock and cut it down to 14.8cm wide, so it's 14.8cm x 29.7cm. Set aside the offcut; you will need this in Step 5.
2. From the left edge, score at 4.5cm. From the right edge, score at 6.5cm.
3. Fold in half, then fold the 6.5cm flap back on itself to the right. Fold the 4.5cm flap as if you were closing the card. Now you can see how the card works, you can mark each section which needs covering in Designer Series Paper. Or you can follow the guides below:



4. Add your white cardstock and DSP as shown. You can vary your DSP designs; I've used the same image for simplicity.
5. Cut the Night of Navy offcut down to 2.5cm wide, retaining the length. Set the remainder aside.
6. Fold this around the closed card gently to form a belly band, with the join at the front of the card. Folding around is more successful than attempting to measure accurately. When it fits firmly but not too snugly to move, join it using strong adhesive and trim off the excess.
7. On the Tasteful Label die-cut (or your choice), stamp your greeting.
8. With the belly band around the card and the join at the *front*, attach the label to cover the join. Embellish with a flower and leaf. Inside the card, add a strip of leftover DSP or any other decoration as desired.