

# Triangle Gift Box

This triangle box is great for packing small gifts. It's made from one sheet of A4 cardstock but you can use the offcuts to make gift tags. .

You will need:

- ✦ Basic craft kit including scissors, adhesives and dimensionals
- ✦ A paper trimmer
- ✦ A means of scoring - either with your trimmer or a score board
- ✦ Christmas greeting stamps and ink pads
- ✦ A punch to cut away a circle or diamond. I used the edge of the Tailored Tag Punch. Or the old Envelope Punch Board. If you don't have any of these, scissors will do.
- ✦ Corner rounder if you have one (it's not a current item)

## Measurements

- ✦ A4 cardstock, cut to 19 x 24cm
- ✦ DSP 6.5cm square
- ✦ Two pieces of DSP 6cm x 7cm
- ✦ Stamped label

Template is on the final page.

1. Cut your A4 to 19 x 24cm.
2. Score at 6cm from each side measuring along the short edge. Then measuring along the long edge, score at 7cm, 14cm and 21cm.
3. Carefully cut away the shaded areas and set this aside to use later. If you have a corner rounder, you can round the corners of the smallest section. If not, you could cut them off at an angle, or just leave them as they are.
4. With the cardstock in the † position, we are going to mark the two flaps on either side, the "arms" if you like. Along the outside edge, measure the halfway point (3.5cm) and mark with a dot. (See template).
5. From this dot, score a line to the corners, to create a triangle.
6. Keeping the box in the † position, turn it over so you are looking at the outside and cover the top square (the "head") and both of the scored triangle flaps with DSP.
7. Trim the outside triangles to leave a flap of about 1cm. You can do this freehand without measuring.
8. Keeping the box in the † position, apply adhesive to just the top two triangle flaps, as shown on the template. *If you glue all four flaps, you won't be able to open the box again!*



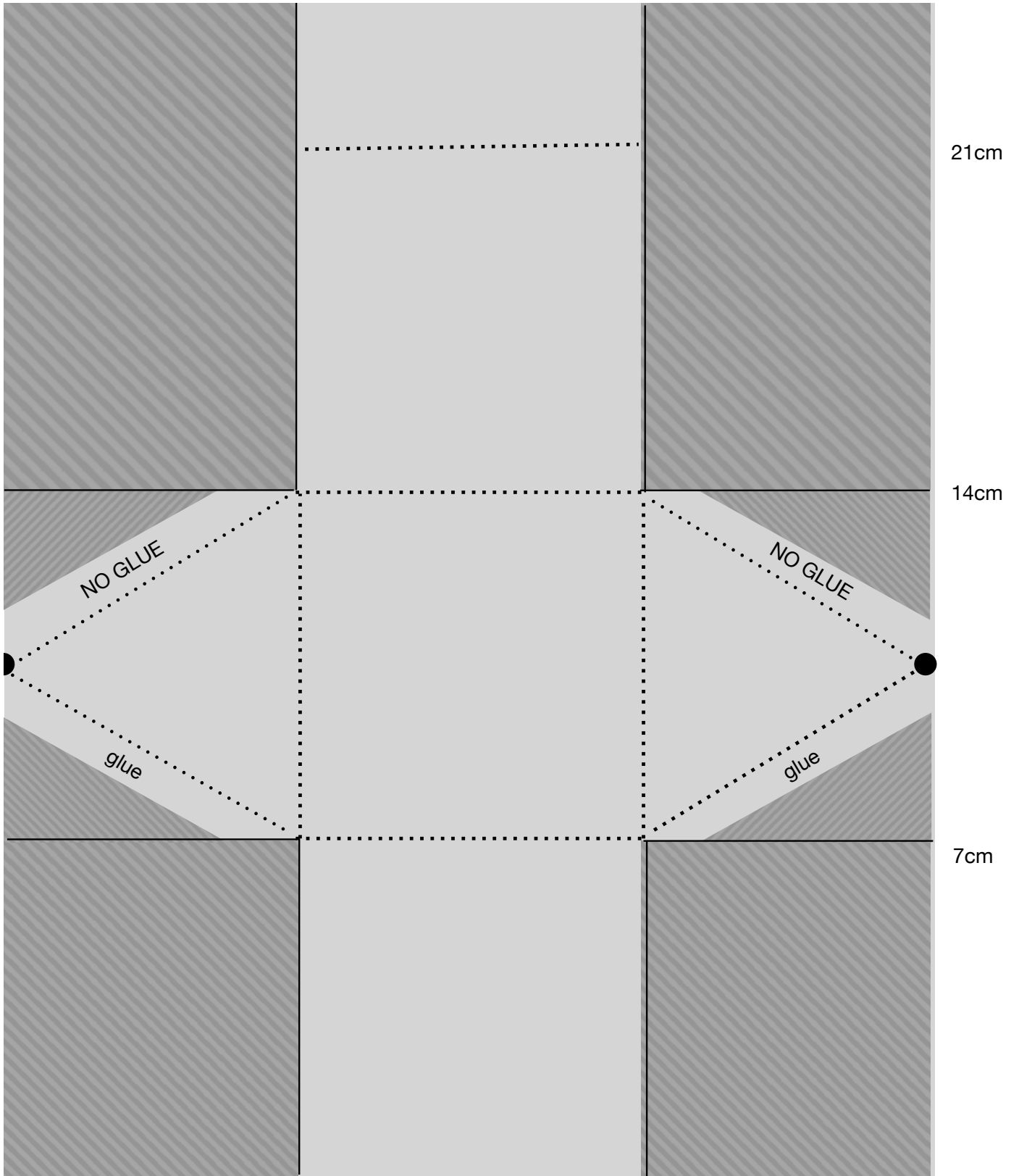


9. Fold in the flaps and attach to the top square to seal. You now have a triangle box, which won't stay closed.
10. To close it, tie your ribbon around it in a bow at the top.
11. Decorate your label with your chosen die-cuts and/or suitable image/greeting stamps and attach with dimensionals to the top flap. Make sure the ribbon can move freely underneath and that the dimensional only stick to the flap, so the box can be opened without damaging it.
12. Use the cut-off pieces and leftover die-cuts/labels to make gift tags.

19cm x 24cm

6cm

6cm



21cm

14cm

7cm