



## Emboss Resist Framed Beautiful Gallery Card



# Supply List

All supplies can be purchased in my online store, this project is [Emboss Resist Framed Beautiful Gallery Card](#). You can add all items to your cart and then remove what you don't need.

Emboss Resist Framed  
Beautiful Gallery Card

By Vanessa Baker



## Measurements

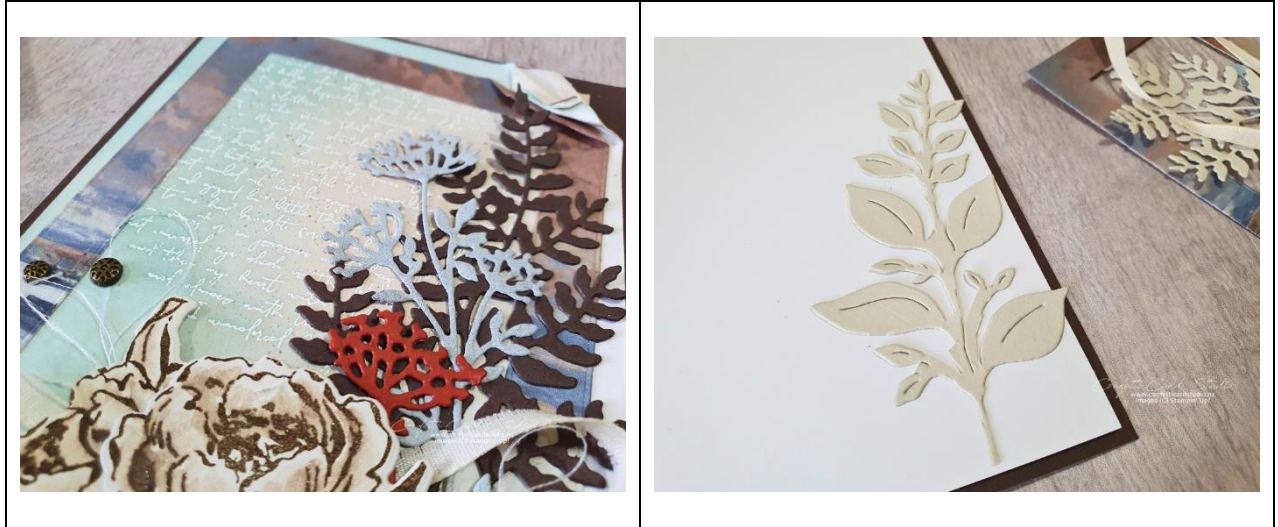
Paper	Number of Pieces	Metric Measurement	Imperial Measurement
Early Espresso Cardstock - Card Base	1	14.9cm x 21cm Scored at 10.5cm	5 ½" x 8 ½" Scored at 4 ¼"
Basic White Cardstock	1	10cm x 14.4cm	4" x 5 ¼"
Beautiful Gallery 6" x 6" Designer Series Paper - 2 Frames (this card uses large) - Queen Anne's Lace Die cut	1 1	9.5cm x 13.7cm 4cm x 11cm	3 ¾" x 5 ½" 1 ½" x 4 ¼"
Basic Beige Cardstock - Flower stamp - Inner die cut	1 1	6cm x 10.5cm 5.5cm x 11cm	2.5" x 4 ¼" 2 1/8" x 4 ¼"
Early Espresso Cardstock - Leaves	1	6cm x 11cm	2.5" x 4 ½"



Scraps of Cloud Cover	1	2.5cm x 4cm	1" x 1 ½"
– Die cuts	1	1.6cm x 4.5cm	5/8" x 1 ¾"
- Sentiment	1	2.5cm x 4.5cm	1" x 1 ¾"
Cajun Craze Cardstock - die cut			
Basic White Cardstock			
- Inner	1	10cm x 14.4cm	4" x 5 ¼"

## Instructions

1. Cut all the cardstock layers and pieces needed as stated in the measurement guide. Cut and score the card base as stated, scoring and folding in half.
2. Stamp the words from Elements of Text using Versamark ink onto the Basic White layer. Cover with Wow! White Embossing Powder, tap off the excess and heat to set.
3. Use Crumb Cake ink on a Blending Brush to start adding colour to the background. Add colour to the whole layer as it will be visible outside the frame. Then add Lost Lagoon ink with a blending Brush, I concentrated this colour more on the left-hand side of the layer since the right has the layered leaves.
4. I distressed the corner of the emboss resist layer by rubbing with my bone folder to break down the fibres then split the card into 2 layers. I inked them with the blending brushes and folded them in a pleasing way before stapling.
5. Adhere the DSP frame to the emboss resist layer, I folded and trimmed the corner to fit with the emboss resist layer.
6. Stamp the flower stamp using Early Espresso ink onto Basic Beige cardstock. Use Wink of Stella or a blender pen to drag some colour upwards on the petals and leaves. Once dry, die cut using the corresponding shape die. Then separate the lower flower with paper snips. Create a pleasing arrangement in a bunch and adhere the flowers together.
7. Adhere the die cut Early Espresso leaves and Queen Anne's Lace die cuts up the right-hand side over the frame.
8. Take approx. 34cm (13") of Basic Beige Classic Ribbon and cut in half lengthways. Form into a bow shape and adhere using Tear and Tape. Fray the ribbon a little so there are wispy threads. Adhere the stamped flowers over top using dimensionals.
9. Tuck in the remaining die cut leaves using liquid glue to adhere.
10. Stamp the sentiment onto the Cloud Cover cardstock using Early Espresso ink. Adhere using dimensionals.
11. Add three Pressed Flower Motifs.
12. Die cut the partial Pop-Up Leaves onto Basic Beige cardstock. Use your paper snips to remove it fully from the cardstock. Adhere into the card.



**Video Tutorial Click below**

[Emboss Resist Framed Beautiful Gallery Card](#)