



Take To The Sky Suitcase with Pop-Up Plane and Card Tutorial

www.confetticardstudio.nz



Supply List

all supplies can be purchased in my online store at www.confetticardstudio.nz

| | | | |
|--|--|--|--|
|  <p>Take To The Sky Suite (163832) \$156.75</p> |  <p>OR Adventurous Sky Bundle (163447) \$112.50</p> |  <p>& Take To The Sky Designer Series Paper (163436) \$26.25</p> |  <p>Smoky Slate A4 Cardstock (131291) 24.25</p> |
|  <p>Basic White A4 Cardstock (159228) \$28.00</p> |  <p>Night of Navy A4 Cardstock (106577) \$24.25</p> |  <p>Night of Navy Classic Ink (147110) \$19.00</p> |  <p>Smoky Slate Classic Ink (147113) \$19.00</p> |
|  <p>Window Sheet (142314) \$10.50</p> |  <p>Heartfelt Hexagon Punch (162888) \$49.00</p> |  <p>Industrial Trinkets (163450) \$18.00</p> |  <p>OR Basic Gray & Smoky Slate Pearls (163416) \$15.75</p> |
|  <p>Masking Paper (155480) \$14.75</p> | | | |

Packed and Ready to Take Off
By Vanessa Baker –
Cased from Delwyn Horner



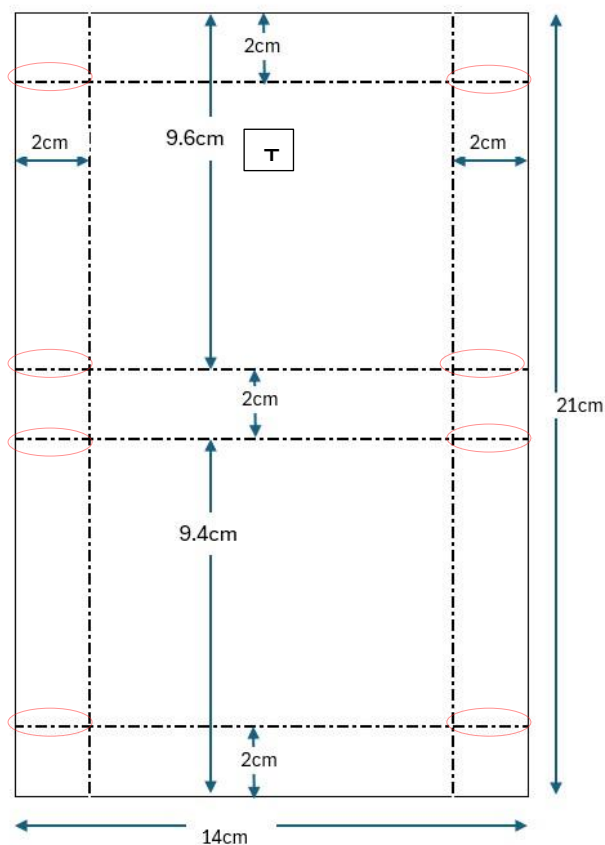
Measurements

| Paper | Number of Pieces | Metric Measurement | Imperial Measurement |
|------------------------------------|------------------|--|--|
| Suitcase Measurements | | | |
| Smoky Slate Cardstock | 1 | 14cm x 21cm | 5 1/2" x 8 1/4" |
| | 1 | Scored as per template pg 4 7cm x 9.8cm | Scored as per template pg 4 2 3/4" x 3 7/8" |
| Take To The Sky DSP | 2 | 7cm x 9.4cm | 2 3/4" x 3 3/4" |
| Top & Bottom | 1 | 7.2cm x 9.8cm | 2 3/4" x 3 3/4" |
| Inside Lid (clouds) | 2 each | 1.5cm x 7cm & 1.5cm x 9.5cm | 1/2" x 2 3/4" 1/2" x 3 3/4" |
| Night Of Navy Cardstock | 1 | 1cm x 8cm | 3/8" x 3 1/4" |
| | 4 | Scored 1cm from each end 3/4" circles | Scored 3/8" from each end 3/4" circles |
| Basic White Cardstock for stamping | 1 | 6cm x 8.5cm | 2 1/2" x 3 1/4" |
| | 1 | 2.5cm x 6cm | 1" x 2 1/2" |
| Window Sheet | 1 | 4cm x 7.5cm | 1 1/2" x 3" |

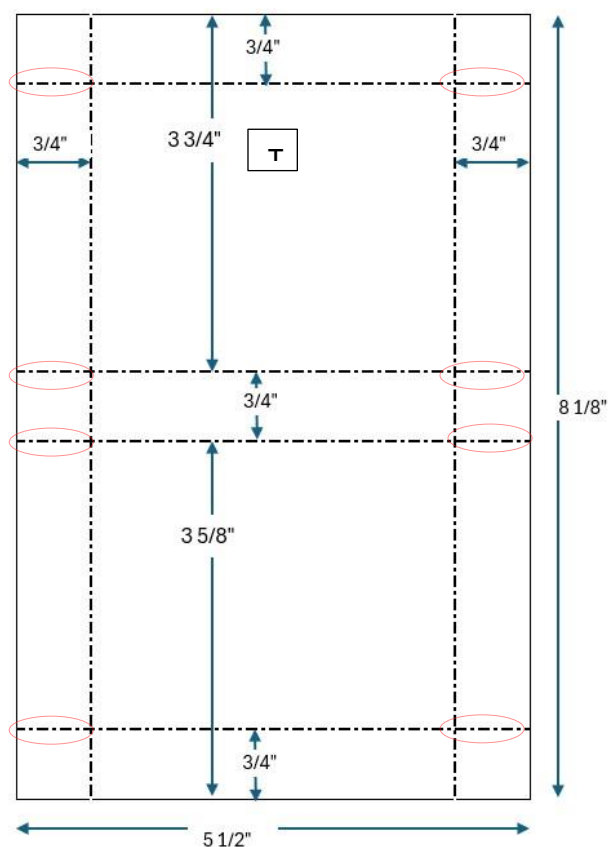
| Card Measurements | | | |
|------------------------------------|------------------|-------------------------------|---------------------------------|
| Paper | Number of Pieces | Metric Measurement | Imperial Measurement |
| Smoky Slate Cardstock | 1 | 9cm x 13cm Scored at 6.5cm | 3 1/2" x 5" Scored at 2 3/4" |
| Take To The Sky DSP | 1 | 6.2cm x 8.6cm | 2 3/8" x 3 3/8" |
| Basic White Cardstock | 1 | 6.2cm x 8.6cm | 2 3/8" x 3 3/8" |
| Basic White Cardstock for stamping | 1 | 6cm x 6cm | 2 3/8" x 2 3/8" |

Suitcase Template

Metric



Imperial



Instructions – Suitcase with Pop-Up Plane

1. Cut all the cardstock layers needed that are listed in the measurement guide. Locate the 9.6cm (3 ¾") end and mark with a pencil with a light T. Fold and burnish the box base. Cut along the score lines as indicated by the red ovals on the template.
2. Locate the end without the T you drew in step 1. Make up the box base by adhering the 2cm (3/4") tabs inside the box against the sides. The video shows this in detail.
3. Bring the top of the box down, over the base with the sides on the outside of the base. Tuck the tabs inside the sides of the lid and glue into position.
4. Attach the larger pieces of Take To The Sky DSP to the outside top and bottom of the suitcase. Then attach the side pieces of DSP.
5. Take the 4 Night of Navy Circles and fold in half, open out and fold in half the other way so it has the 4 quarters marked. Cut out one of these quarters on each circle. Place one quarter section on the top of the corner of the lid of the suitcase and adhere. Adhere the remaining 2 quarters onto the sides of the lid. Repeat with the other 3 corners.
6. Fold the 2 score lines on the Night of Navy thin piece of cardstock for the handle. Dry fit this first so you can gauge the distance from the edge of the panel before adhering it so there's a slight curve in the handle. Attach either Industrial Trinkets or Pearls to the flat sections.
7. Stamp Flying By To Say Hi onto the smallest piece of Basic White cardstock using Night of Navy Ink. Cut into a small tag shape with scissors. Punch or pierce a small hole for the Linen Thread and attach around the handle of the suitcase. Once tied around the handle add a dimensional to attach the tag to the top of the suitcase.
8. Adhere the Take To The Sky cloud pattern DSP into the top of the suitcase.
9. Stamp the large plane onto the 6cm x 8.5cm (2 ½" x 3 ¼") piece of Basic White Cardstock using Night of Navy ink. Use the die and your Stampin' Cut & Emboss Machine to cut out the shape.
10. Attach the plane to one end of the window sheet, fold the other end by approx. 2cm (3/4") and burnish with your bone folder. Place 2 strips of Tear and Tape on the folded end, pull off the backing and adhere to the centre back of the base of the suitcase as pictured.
11. Take the 7cm x 9.8cm (2 ¾" x 3 7/8") piece of Smoky Slate cardstock and stamp the small plane over it using Smoky Slate ink. Adhere this inside the base of the suitcase to cover the window sheet.



Instructions - Card

1. Fold the card base in half on the score line. Attach the DSP to the front.
2. On the square piece of Basic White cardstock stamp the words You're The Best Plane & Simple using Night of Navy Ink. You want to stamp this near the bottom but allowing for the hexagon shape of the punch. I found it easiest to punch out the words before adding the small plane in the same ink. Add this shape to the card front using dimensionals.
3. On the card inner, stamp the small plane in Night of Navy Ink. Stamp again on masking paper. Cut out around the plane close to the edge of the stamp. Place this mask over the image you stamped on the inner. Now you can add the small cloud stamp around the plane. Remove the mask and the clouds appear to be behind the plane. Adhere to the centre of the card and place the card inside the suitcase.



Video Tutorial Click below

[How to Make a Suitcase with pop-up Plane and Card with Stampin' Up! Take To The Sky Suite](#)