

Oklahoma Stamp Club



Create Today with Lisa Salkeld

lisasalkeld.stampinup.net ✦ stampyandscrappy.blogspot.com

August 2023

Envelope Box + 2 Cards

<https://stampyandscrappy.blogspot.com>

Finished box is 6 x 4-1/2 x 3/4

Finished cards are 4-1/4 x 5-1/2

Create this A2 envelope gift box and coordinating cards

Supplies

Stamp: Forever Friends Kit 162363 & Cheerful Daisies pp. 110-111

Paper: [cardstock] Forever Friends Kit, Daffodil Delight, Petal Pink, Old Olive, Garden Green, Calypso Coral, Petal Pink [design papers] Fresh as a Daisy 12 x 12 161289

Ink: Early Espresso

Et cetera: [dies] Cheerful Daisies [punches] Very Best Trio 159878, 2-3/8 Circle 161354 [embellishments] Real Red & Garden Green ribbon 159577, Loose Daisy Embellishments 160555,

Glue Dots 103683

Surplus* tape

Measurements

Card blanks are 8-1/2 x 5-1/2 scored down at 4-1/4 and folded on the side
Design paper panels for card1 are 3-3/4 x 5 and pre-cut element from the kit; design paper panels for card2 are (3) 1-5/8 x 3-3/4

To create the box, see handout: A2 Gift Box with Envelope Cover

Attaching a bow: Use a glue dot and a small drop of glue. Place a clean, clear stamping block over ribbon until the glue sets.

Twinkle Tip

Extend your kits by combining them with design papers. Use coordinating inks and cardstocks to harmonize patterns.

-Lisa (🌸~^~)



Stamps and supplies are current at posting. For similar or additional supplies visit <https://lisasalkeld.stampinup.net> >shop now

Kit – Forever Friends

<https://www.stampinup.com/products/forever-friends-kit-english?dbwsdemoid=2048063>

Paper – Fresh as a Daisy

<https://www.stampinup.com/products/fresh-as-a-daisy-12-x-12-30-5-x-30-5-cm-designer-series-paperdbwsdemoid=2048063>

Dies Only – Cheerful Daisies

<https://www.stampinup.com/products/cheerful-daisies-dies?dbwsdemoid=2048063>

BUNDLE – includes stamp and dies

<https://www.stampinup.com/products/cheerful-daisies-bundle-english?dbwsdemoid=2048063>

Punch – Very Best Trio

<https://www.stampinup.com/products/very-best-trio-punch?dbwsdemoid=2048063>

Punch – 2-3/8 Circle

<https://www.stampinup.com/products/2-3-8-6-cm-circle-punch?dbwsdemoid=2048063>

Ribbon

<https://www.stampinup.com/products/real-red-garden-green-3-8-1-cm-ribbon-combo-pack?dbwsdemoid=2048063>

Loose Daisy Embellishments

<https://www.stampinup.com/products/loose-daisy-embellishments?dbwsdemoid=2048063>



August 2023

Everlasting Beauty⁺

<https://stampyandscrappy.blogspot.com>

Finished card is 5-1/2 x 4-1/4

Create this card with unique floral illustrations

Supplies

Stamp: Everlasting Beauty 161255

Paper: [cardstock] white, Old Olive, Pretty Peacock [design papers] Hello, Irresistible 6 x 6 161139

Ink: Memento Black, [Versamark watermark ink, Basics Embossing Powders 155554]

Et cetera: A selection of Blends markers pp. 122-123 and Watercolor pencils p. 125 (see below), [ribbon] Lost Lagoon Bordered ribbon 161171, Simply Elegant Trim 155766

Surplus[®] embellishments in gold, tape

Measurements

Card base is 5-1/2 x 8-1/2 scored across at 4-1/4 and folded at the top
Design paper panel is 5-1/4 x 4, stamped panel is 5 x 3-3/4

Blends markers used:

Cajun Craze, light

Petal Pink, light and dark

Daffodil Delight, light and dark

Old Olive, light and dark

Lost Lagoon, light

Watercolor pencils used:

Cajun Craze, Calypso Coral, Early Espresso, Daffodil Delight, Old Olive

Twinkle Tip⁺

Mix-up coloring tools to create vibrant designs. Use alcohol markers for a base-layer of color, then add shading and color with watercolor pencils.

-Lisa (✿ ^_^)



Annual catalog pp. 76-77

Techniques: Blends markers, Watercolor pencils



Stamps and supplies are current at posting. For similar or additional supplies visit <https://lisasalkeld.stampinup.net> >shop now

Stamp only – Everlasting Beauty

<https://www.stampinup.com/products/everlasting-beauty-cling-stamp-set-english?dbwsdemoid=2048063>

Papers – Hello, Irresistible

<https://www.stampinup.com/products/hello-irresistible-6-x-6-15-2-x-15-2-cm-designer-series-paper?dbwsdemoid=2048063>

Ink – Memento Black

<https://www.stampinup.com/products/memento-ink-pad-tuxedo-black?dbwsdemoid=2048063>

Ink Refill – Memento Black

<https://www.stampinup.com/products/memento-ink-refill-tuxedo-black?dbwsdemoid=2048063>

Ink – Versamark

<https://www.stampinup.com/products/versamark-pad?dbwsdemoid=2048063>

Ink Refill – Versamark

<https://www.stampinup.com/products/versamark-ink-refill?dbwsdemoid=2048063>

Ribbon – Lost Lagoon

<https://www.stampinup.com/products/lost-lagoon-6-4-mm-bordered-ribbon?dbwsdemoid=2048063>

Ribbon – Gold trim

<https://www.stampinup.com/products/simple-elegant-trim?dbwsdemoid=2048063>



Tutorial
A2 Gift Box with Envelope Cover
with Lisa Salkeld



Supplies

- Card stock: (3)
 - 7-1/2 x 9-3/4 (Box)**
 - 6 x 9-1/4 (Envelope flap)**
 - 3-3/4 x 5-3/4 or, 3-3/4 x 5-1/4 (Panel for front cover)**
- Paper trimmer with extendable arm for larger projects and blades for both cutting and scoring
- Bone folder or paper creasing tool
- Corner punch + Circle punch

Finished box is 6 x 4-1/2 x 3/4

Four parts: 1) Create the box, 2) Create the fold over envelope-style flap, 3) Assemble the box including adding a panel to the flap and 4) Add closing mechanism and other embellishments.

◆Cutting and scoring

Part 1: Create the box

___ Start with the 7-1/2 x 9-3/4 sheet of card stock

___ With 7-1/2 across top, score down at 3/4 and 6-3/4 or, **3/4 from each side**

___ With 9-3/4 across top, score down at 4-1/2 and 5-1/4 or, **4-1/2 from each side**

___ In both outside, 3/4 margins, cut the score lines between the edge and the nearest score line; do not cut past the score line. Make (4) cuts in total

___ Use circle punch to cut a half-circle into the center-edge of one of the 7-1/2 sides; this becomes the front of your box

___ Burnish all score lines

Cutting and scoring the box is complete. Go to Part 2.

Part 2: Create the envelope flap

___ Start with the 6 x 9-1/4 sheet of card stock

___ With 9-1/4 across top, **score down at 4-1/2 and 5-1/4** (do not score 4-1/2 from each side)

___ Ignoring the center margin, one section will be noticeably smaller. This is the front flap of the box. If desired, use a corner-rounder or punch on the two front flap corners.

___ Burnish score lines.

Cutting and scoring the envelope flap is complete. Go to assembly.

◆Assembling

Assembling the box

___ Add glue to the outside sections of the back of the box and the small center flaps.

Keep the adhesive in the 3/4 margins only.

___ Form the box by tucking the small center flaps inward, then folding the front and back sides together. Carefully overlay the front flap over the back flap. Repeat on both sides.

Use a bone folder to reach into the box and secure the small flaps against each side.

Adding the envelope flap

___ Check placement, first. The smaller flap, with the corners rounded, lays over the portion of the box with the half-moon cut out. The half-moon should be facing the center of the envelope flap and not visible when closed. The front portion of the envelope flap does not completely cover the front of the box.

___ Find the inside portion of the larger section of the envelope flap and add adhesive.

Attach to the back of the box. Keep glue in the larger back section of the flap only. The center margin and smaller, front section of the envelope flap do not have adhesive.

The blank envelope box is complete.

Part 3: Almost there!

Add a decorative panel to the front.

___ Start with either a 3-3/4 x 5-3/4 or, 3-3/4 x 5-1/4 piece of card stock in a coordinating color. Size depends on your choice of corner punch and your design.

___ Use a corner-rounder or punch on all four corners of the decorative panel. Attach to the front of the box, centering the panel on the flap.

Add a fastener tab

___ Die cut or punch a shape approximately 1 x 2. Add foam dimensional tape to the lower half of the shape. Attach to the bottom-center-front of the box taking care to ensure the envelope flap fits securely behind the upper portion of the shape, which is now a fastener tab.

Part 4: Embellishments and sentiment

Adhere die cuts, stamped images, or other embellishments to the box. If desired, add a sentiment.

Gift box with envelope cover is complete. Box fits 3-4 A2-sized cards with envelopes.

$\frac{3}{4}$ →

← $\frac{3}{4}$

4 1/2 →

cut away

$2 \frac{3}{8}$ circle punch

cardstock:

$7 \frac{1}{2} \times 9 \frac{3}{4}$

front

snip
snip
snip

snip
snip
snip
5 1/4

BOX

BOX FLAP attaches here

adhesive

adhesive

back

← 4 1/2

corner punch

corner punch

cardstock:

6 x 9 1/4

FRONT SECTION
IS SMALLER THAN
BACK SECTION

FRONT

NO
Adhesive

NO Adhesive

BOX FLAP

BACK

Adhesive on
REVERSE
Attach to BOX
Back

7/9

2/4

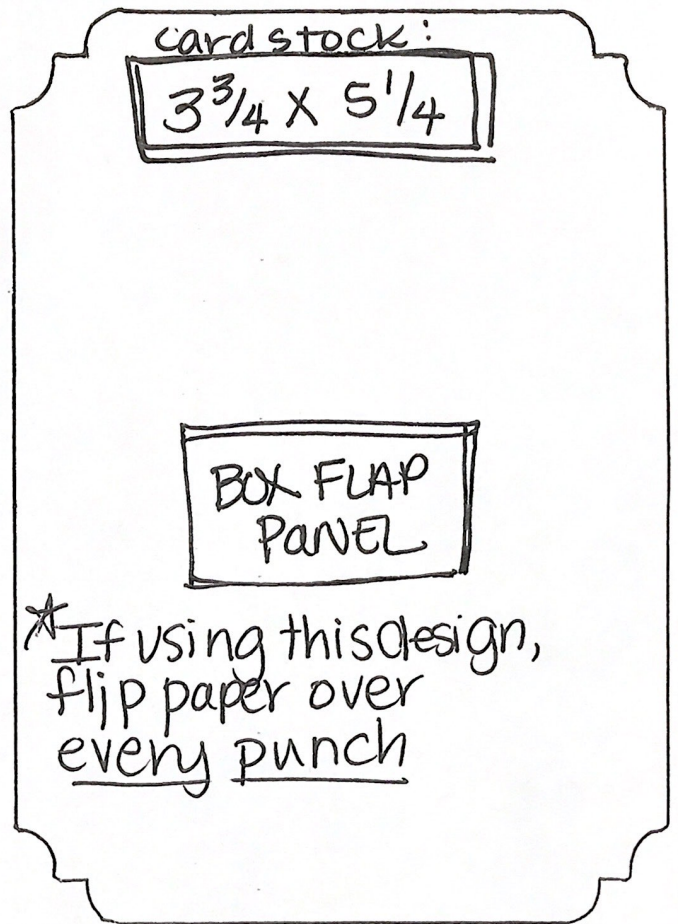
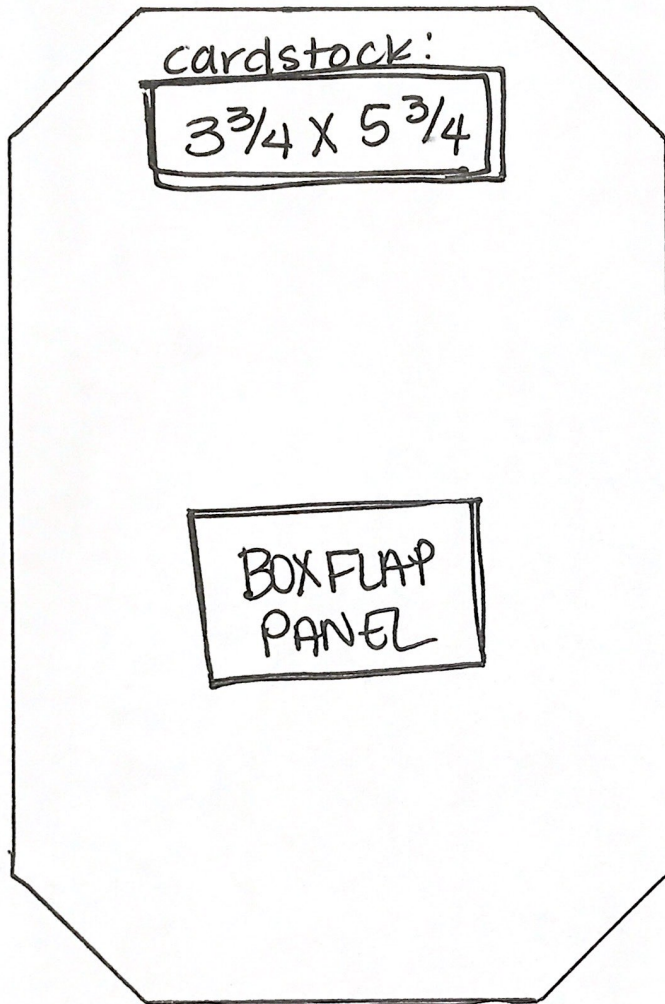


@ 2100S

OPTION 1

ou
m

OPTION 2



TRIO PUNCH

DECORATIVE PANEL