

Creatively Folded  
**A2 Card in a Box**  
with Lisa Salkeld

## Supplies

**Card stock:**  (1) 8-1/2 x 11 your choice color;  (1) 1-7/8 x 5-1/4 white

**Design paper:**  (1) 6 x 6;  (1) 1-7/8 x 5-1/4

Paper trimmer with extendable arm for larger projects and blades for both cutting and scoring

Bone folder or paper creasing tool

Finished card is 5-1/2 x 4-1/4 and fits an A2 envelope, 5-3/4 x 4-3/8

Four parts: 1) Create the box, 2) Create the braces, 3) Cutting and adding the design paper panels + assembling the box, and 4) Embellishments and a sentiment

### ◆Cutting and scoring

#### Part 1: Create the box

\_\_\_ Start with an 8-1/2 x 11 sheet of card stock, cut to 5-1/2 x 9-1/4

\_\_\_ With 5-1/2 across top, score down at 2-1/2

\_\_\_ With 9-1/4 across top, score down at 2-1/8 4-1/4 6-3/8 8-1/2

Keep the 1/2 column on the right

\_\_\_ Cut away the top-right 1/2 x 2-1/2 box

\_\_\_ Miter the top and bottom of the remaining 1/2 x 3 column; this tab is for adhesive

Keep the 1/2 column on the right

\_\_\_ In the top row only, cut score lines from top edge of box to center score line, do not cut past the center score line

\_\_\_ Burnish all remaining score lines

Cutting and scoring the box card base is complete. Go to Part 2.

#### Part 2: Create the braces

\_\_\_ Use a leftover piece of card stock from Part 1, cut to 3-1/8 x 2-5/8

\_\_\_ With 3-1/8 across the top, score down 1/2 from the left side

\_\_\_ Repeat on the other side, keeping the 3-1/8 across the top

\_\_\_ With the 2-5/8 across the top, cut at 1-3/4 and 7/8

\_\_\_ Burnish all score lines

Cutting and scoring the braces is complete. Go to Part 3.

### Part 3: Cutting design paper panels

Design paper panels \*Note pattern direction→the top will be along the 5-5/8 edge

\_\_\_ Start with a 6 x 6 sheet of design paper, cut to 5 x 5-5/8

\_\_\_ With the 5 across the top, cut at 2-3/4; you now have two pieces of design papers

\_\_\_ With the 5-5/8 across the top, cut one piece at 3-3/4 and 1-7/8

\_\_\_ Repeat with the second piece

Additional panels

\_\_\_ Outside back writing panel: Cut (1) white card stock 1-7/8 x 5-1/4

\_\_\_ Inside back: Cut (1) design paper 1-7/8 x 5-1/4

Cutting and scoring is complete. Go to Assembling the box card.

### ◆Assembling the box card See printable, *Adding the panels from Part 3*

Keep the adhesive tab on the right

\_\_\_ Adhere to this side: ☆box wraps and ☆outside back writing panel (white cardstock); ☆adhesive will go on this side as well, but not yet. Box wraps are adhered to the three sections nearest the adhesive tab. The writing panel is adhered to the column opposite, or farthest, from the adhesive tab. The writing panel will cover the top and bottom sections of the column

Flip so that adhesive tab is on the left

\_\_\_ Adhere to this side: flap topsides fit card stock flap sections above box wraps; when flaps are folded down both design papers should be visible, flat topsides and box wraps

\_\_\_ Special note: before adhering inside back (design paper) to the reverse side of the writing panel, create the box form by gluing the adhesive tab to its opposite panel, forming the box card. Once glued together, the adhesive tab should be visible on the inside of the box. Then, add the inside back design paper panel which will cover the adhesive tab.

To attach the braces, add glue to the outside tabs and secure within the box opening. As each brace is attached, make sure it sits flush at the top of the opening, not too high or too low.

\_\_\_ Add the first brace, tabs reaching toward the front of the box. The brace itself will be parallel with the front of the box.

\_\_\_ Add the second brace, tabs reaching toward the back of the box. The brace will be parallel with the back of the box.

\_\_\_ Center the final brace, tabs reaching toward either the front brace or the back brace.

\_\_\_ Close or flatten box and fold to the left and to the right making sure tabs are securely in place

Assembly of the box card is complete. Go to Part 4.

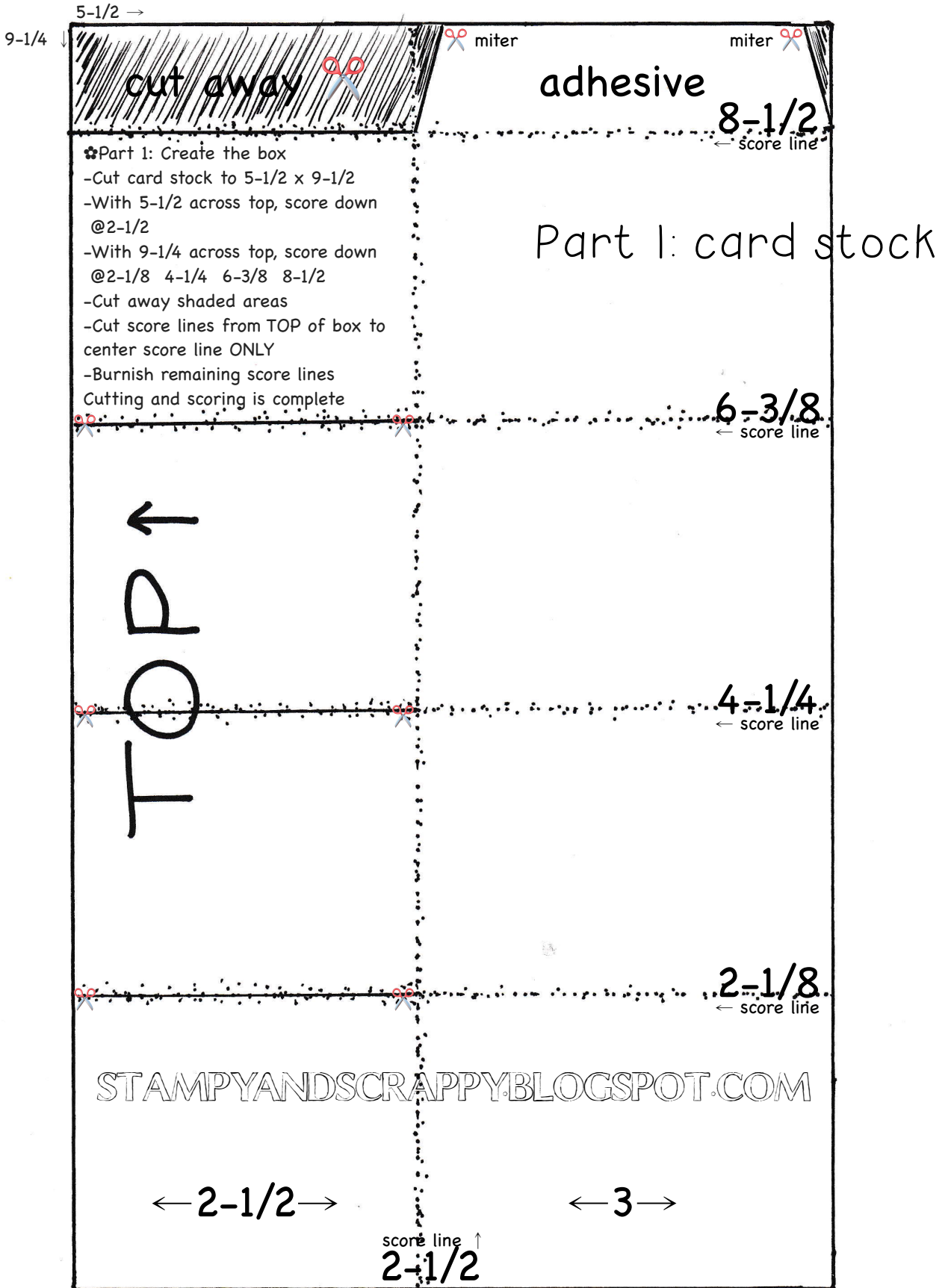
### Part 4: Embellishments and sentiment

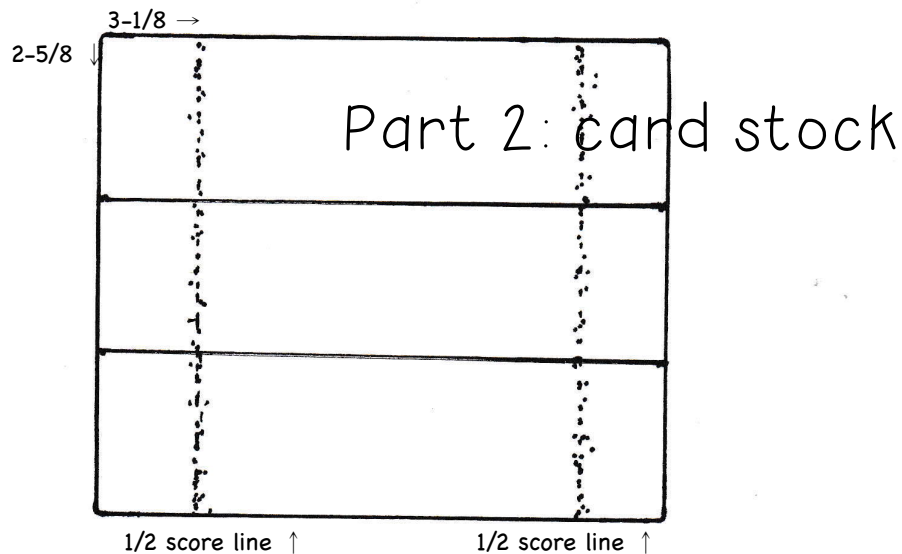
Adhere die cuts, stamped images, or other embellishments to the braces inside the box. Check that pieces do not extend over the edge or are not visible when the card is closed by folding the closed box both to the left as well as the right. Check often. This will ensure that the box card will fit into an A2 envelope.

Add sentiment.

A2 box card is complete.

Creatively Folded  
**A2 Box Card**  
 with Lisa Salkeld





✿Part 2: Create the braces

-Cut card stock to  $3\frac{1}{8} \times 2\frac{5}{8}$

-With  $3\frac{1}{8}$  across top, score down  $\frac{1}{2}$  from left side,  
turn and repeat on the other side

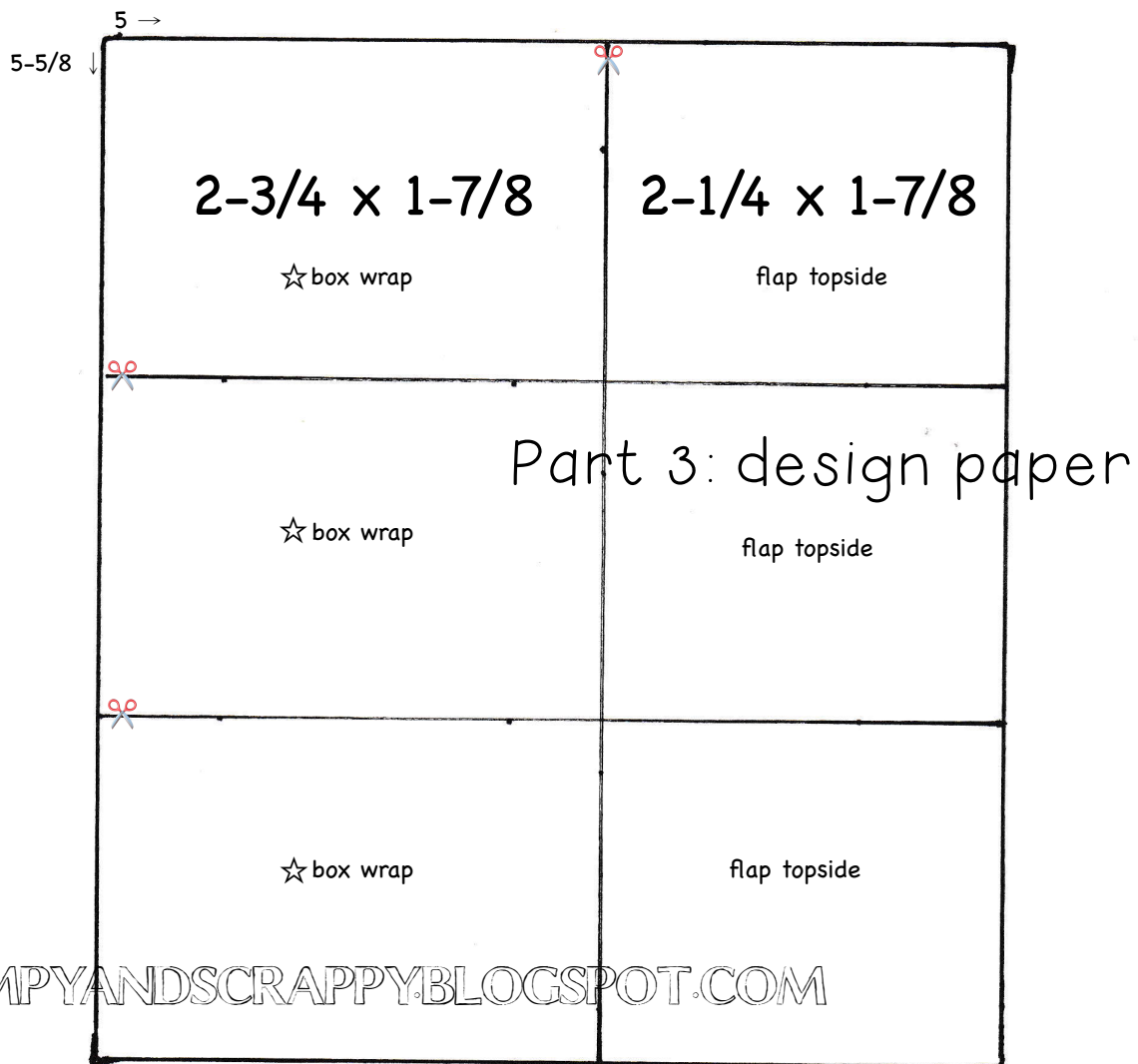
-With  $2\frac{5}{8}$  across top, cut @  $1\frac{3}{4}$  and  $\frac{7}{8}$

-Burnish the score lines

Cutting and scoring is complete

When assembling box, line one brace up with the front of the box opening,  
line second brace up with back of the box opening,  
then center the third brace, lining it up with either the front or the back brace

STAMPYANDSCRAPPYBLOGSPOT.COM



STAMPYANDSCRAPPY.BLOGSPOT.COM

✿Part 3a: Design paper panels

-Cut design paper to 5 x 5-5/8 note pattern direction

-With 5 across the top, cut @2-3/4; you now have two pieces of design paper

-With 5-5/8 across the top, cut one piece @3-3/4 and 1-7/8; repeat with the second piece

✿Part 3b: Additional panels (see next page)

Outside back writing panel: Cut (1) white card stock 1-7/8 x 5-1/4 card stock

Inside back: Cut (1) design paper 1-7/8 x 5-1/4 design paper

—> see Assembling the box card

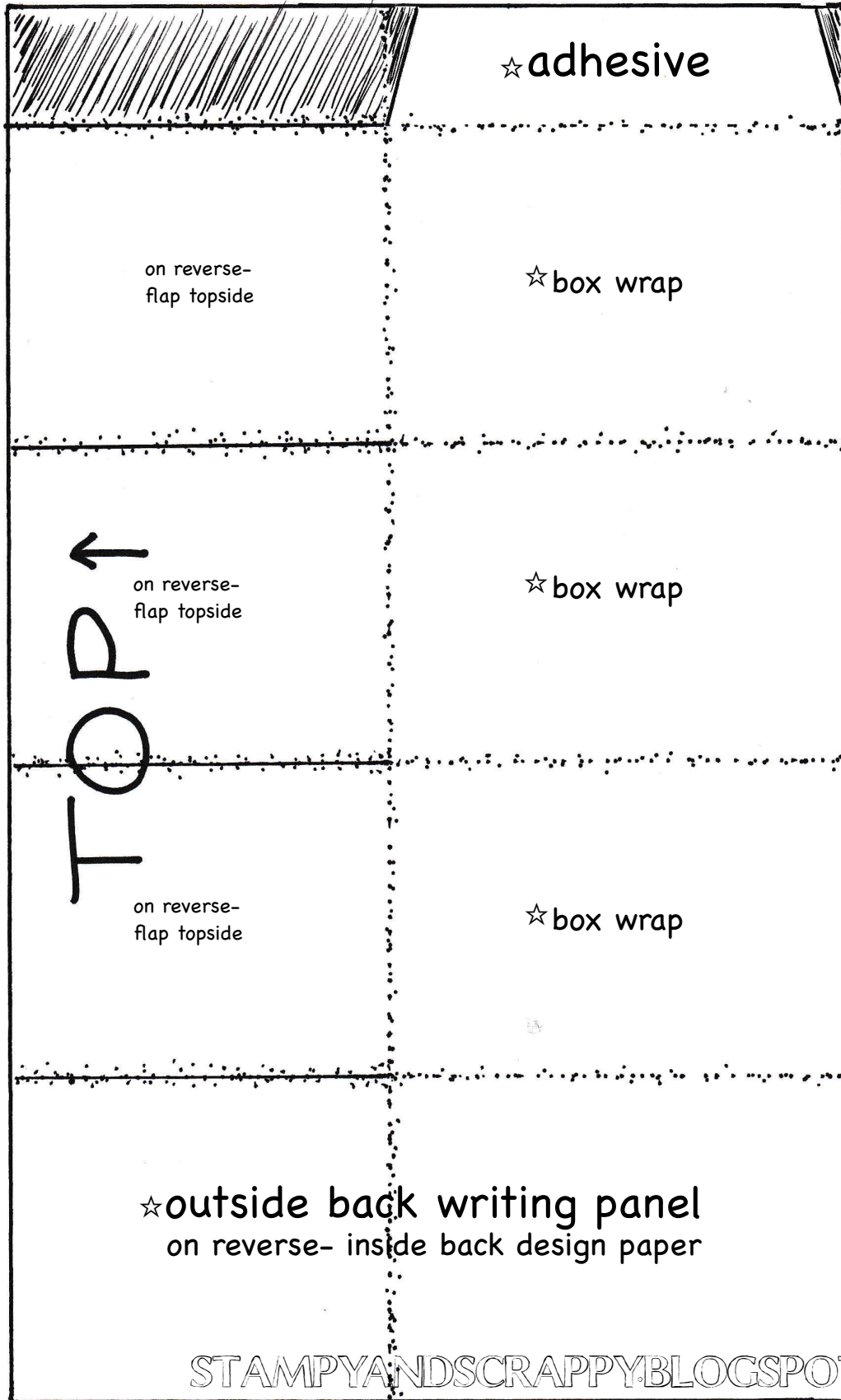
✿Part 4: Embellishments & Sentiment

Adhere die cuts, stamped images, or other embellishments to the braces inside the box. Check that pieces are not seen when the card is closed by folding the box both to the left as well the right. This ensures the card will fit into an A2 envelope.

Add sentiment.

Finished card is 4-1/4 x 5-1/2

# Adding the panels from Part 3



*Creatively Folded: A2 Card in a Box with Lisa Salkeld*



## *Creatively Folded: A2 Card in a Box with Lisa Salkeld*

